



WORKTOP IMPRESSIONS 2011 – 2013

GetaLit®

GetaCore®

CONTENTS

GetaLit[®] elements

5 Introduction

6 GetaLit[®] elements – Kitchen worktops

Stone & Fantasy reproductions

Woodgrain reproductions

Uni decors

HighGloss decors

Square lipped worktops

Vanity elements

18 Decor guide

34 Technical information

General information

GetaLit[®] elements types

Kitchen worktops – Decor stock-code guide

Vanity elements & Accessories – Decor stock-code guide

Care & Maintenance

23 Introduction

24 GetaCore® elements – Kitchen worktops

Fine & Coarse decors

Star, Terrazzo & Raindrops decors

Kitchen worktops with integrated sink modules

Bathroom tops

32 Decor guide

34 Technical information

General information

GetaCore® elements types

Kitchen worktops – Decor stock-code guide

Worktops & Bathroom tops accessories

Bathroom tops & bowls – Decor stock-code guide

Care & Maintenance

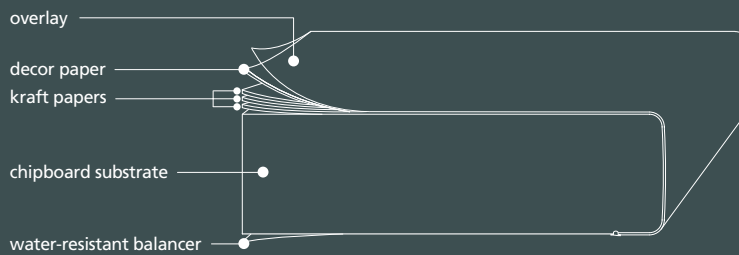


Photo: Getalit® kitchen worktop decor MK 194 Bril.

PROFILED AND SQUARE LIPPED WORKTOPS

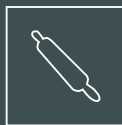
The appeal of GetaLit® worktops lies in their intelligent layering in the HPL process. The abbreviation HPL stands for High Pressure Laminate – decorative laminated boards according to the European Standard EN438. They offer extraordinary stability, superb finish and an enormous range of decors.

Product specification



In accordance with our warranty manual – available from your distributor.

Quality features



food safe to EN 1186 and EN 13130



light-fast to EN 438



resistant to common household chemicals



abrasion resistant to EN 438



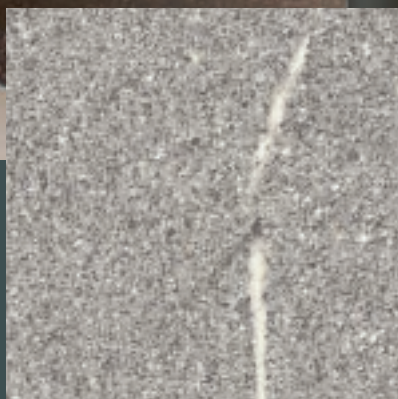
heat resistant up to 230° C



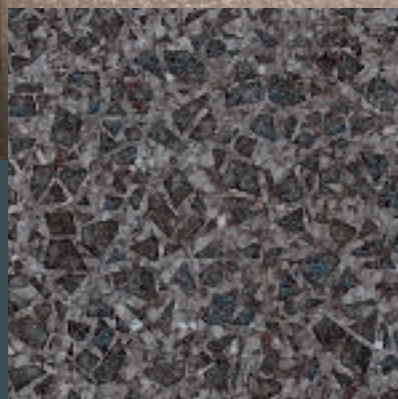
steam resistant to EN 438



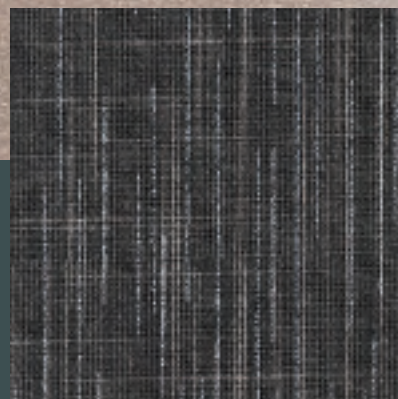
impact resistant to ISO 13894



| H 442 Rc |
pietra piacentina



| MK 155 Rc |
tiziano



| L 441 T |
brown line

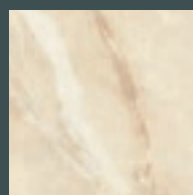


Photo: GetaLit®
kitchen worktop decor
MK 214 Cr and A 242 Cr

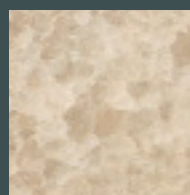


New surface
finishes Roca
and Tessutto

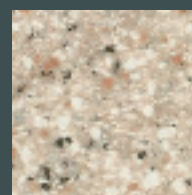
Stone is a material with features like durability, resistance and great stability – just like the GetaLit® worktops. The cool stone appearance combined with modern Uni decors as well as warm wood tones is particularly attractive.



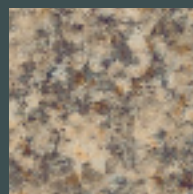
| SL 239 C |
marble manila



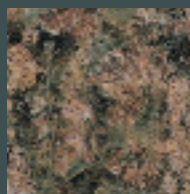
| GT 269 C |
granite polar



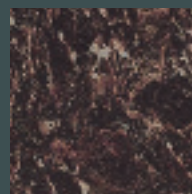
| FN 371 Fb |
sand stone



| G 169 C |
granite walnut



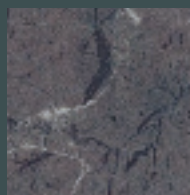
| GT 741 C |
granite baltik



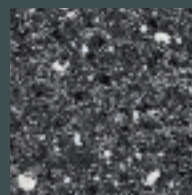
| Ci 136 C |
granite chestnut



| C 413 Cr |
arathea concrete



| C 127 C |
marble italy



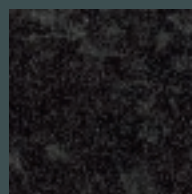
| ST 12 C |
stone black white



| RS 431 C |
grey speckle



| GN 711 Rc |
fabrini anthrazit



| BT 144 C |
moon star

Decor guide see page 18–21.

For exact availability please see decor stock-code guide page 36–37.

WOODGRAIN | FINE NUANCES

Wood tones introduce warmth and richness into your kitchen. Precious woods with various grains and colour nuances are the basis for the diverse range of wood decors. At first glance scarcely distinguishable from the real thing, the worktops enhance the quality of your kitchen.



| BBL 355 PoF |
coimbra



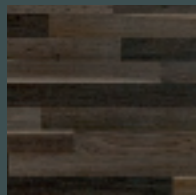
| EIS 344 PoF |
oak rough sawn



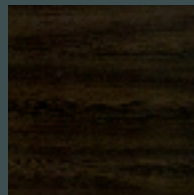
| NU 742 PoF |
nut tree
butcherblock



| BBL 739 PoF |
butcherblock
wenge



| EIS 396 PoF |
smoke oak
butcherblock



| WE 716 PoF |
wenge

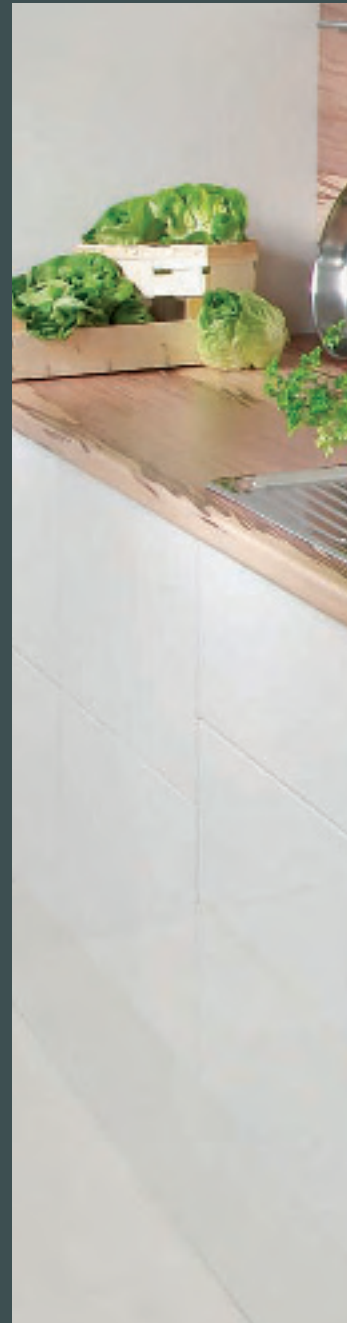
DIGITAL PRINT



| AN 340 PoF |
apple heartwood



| BU 392 PoF |
red core beech light



Decor guide see page 18–21.

For exact availability please see decor stock-code guide page 36–37.



Photo: GetaLit® kitchen worktop decor BU 392 PoF.



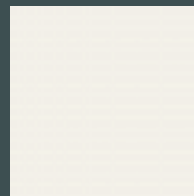
| BBL 242 PoF |
ajaccio oak



Photo: Ewe ewedition 02C/04 color panna/eiche havanna.



The people who go for Uni see the kitchen as a concept: The simple, clear series has no fussy detail – that’s what makes it so convincing. The strong colours of the Uni decors are eye-catching in every kitchen and offer an attractive tool for design, decors will show an appearance full of light and colour in every kitchen application.



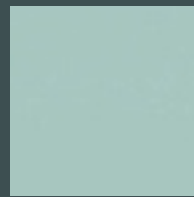
| A 242 Cr |
plain white



| A 320 Cr |
sand



| A 332 Cr |
cappuccino



| A 505 Bril |
glass green



| A 1 Cr |
black

Decor guide see page 18–21.

For exact availability please see decor stock-code guide page 36–37.

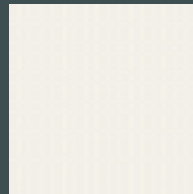
HIGHGLOSS | IMPRESSIVE & BRILLIANT



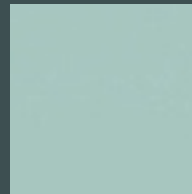
Photo: GetaLit® kitchen worktop decor MK 194 Bril.



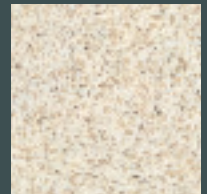
The mirror-finished surface HighGloss (Brilliantgloss) is a glossy and appealing eye-catcher. Thanks to the high-quality finish you will have lasting satisfaction with the pristine gloss in your kitchen! Especially the stone reproduction decors offered in HighGloss surface finish reflect a real stone appearance.



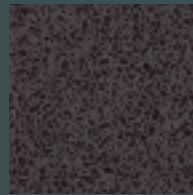
| A 242 Bril |
plain white



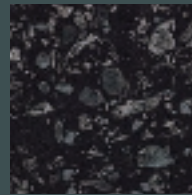
| A 505 Bril |
glass green



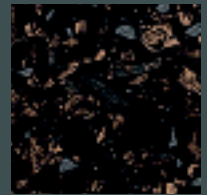
| GN 244 Bril |
fabriini beige



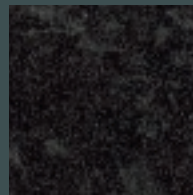
| GN 711 Bril |
fabriini anthrazit



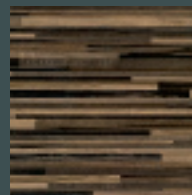
| MK 171 Bril |
terrazzo black



| MK 194 Bril |
terrazzo adige



| BT 144 Bril |
moon star



| BBL 739 Bril |
butcherblock wenge

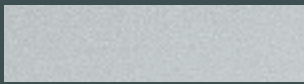
Decor guide see page 18–21.

For exact availability please see decor stock-code guide page 36–37.

SQUARE LIPPED WORKTOPS | STRAIGHT EDGED

All 60 GetaLit® laminate worktop decors are available either HPL-laminate- or PP-(3D-)square-edged to create a rather solid square look of your kitchen worktop. Single-sided tops as standard kitchen worktops, dual-sided tops installed as shelvings or furniture side panels, giving you all options to a nice colour-matched furniture completion.

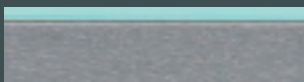
40 MM PP-EDGES | EFFECT-EDGES



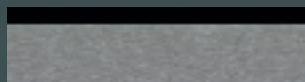
| PP 142 |



| PP 72675 |



| PP 4050 |



| PP 4010 |



| PP 90806 |



| PP 2155 |

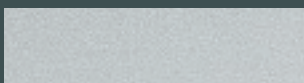


| PP 5995 |



| PP 367 |

40 MM ALU-EDGES



| smooth |



| grooved |



| Lisene |*

60 MM MAXIMO PP-EDGE



| PP 72675 |

* Example with decor L 441 T.

Decor guide worktop-matching colours see page 36–37.

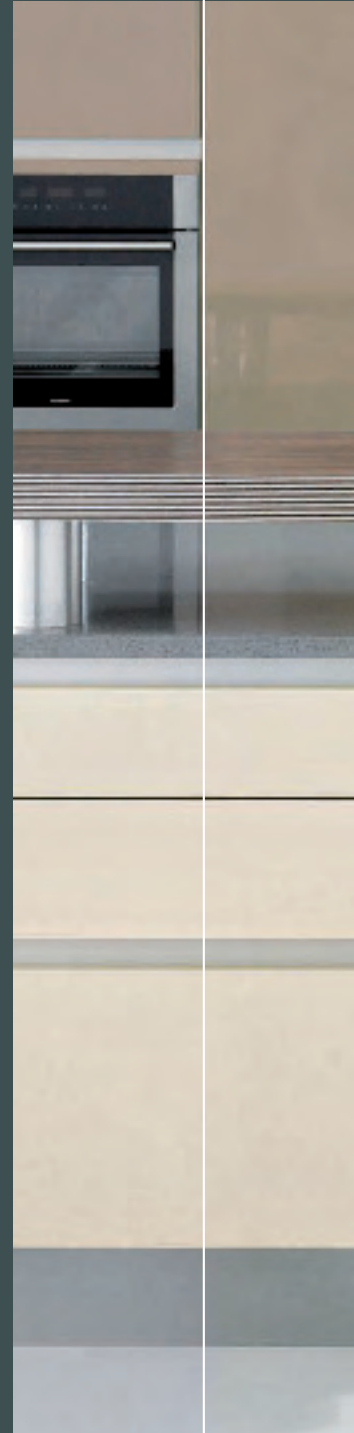




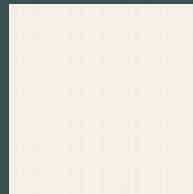
Photo: Mereway Kitchens – Futura cappucino and pergamon gloss



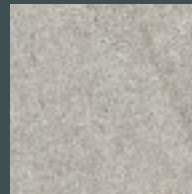
Photo: GetaLit® vanity top decor WE 716 PoF.



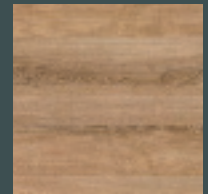
60 mm Maximo vanity tops created in seven modern GetaLit® HPL laminate decors offer a modern design for nearly any bathroom situation. They can either be individually fitted – or – can be combined with existing modern woodgrain reproduction furniture. Offered together with an adopted fixing concept (L-consoles) or towel rack (R-consoles) allow an easy and quick installation.



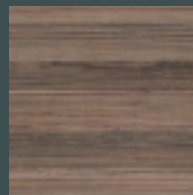
| A 242 Bril |
plain white



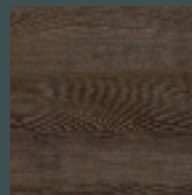
| C 438 Cr |
kamala grey



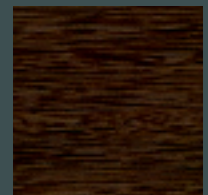
| ES 295 PoF |
ash tree messina



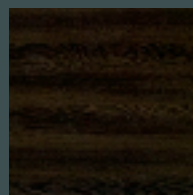
| BB 924 PoF |
talisa plum



| ES 721 PoF |
ash tree sedan



| Zo 715 PoF |
onde

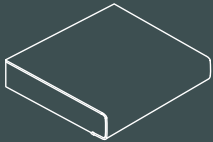


| WE 716 PoF |
wenge

Decor guide see page 18–21.

For exact availability please see decor stock-code guide page 38.

AF 40/133 | TRI LINE PROFILE



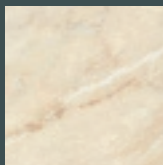
SINGLE-POSTFORMED

4100 x 600/650/900/1200 x 39 mm
5200 x 600/650/900/1200 x 39 mm

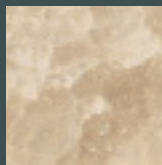
DOUBLE-POSTFORMED

4100 x 670/900/1200 x 39 mm
5200 x 670/900/1200 x 39 mm

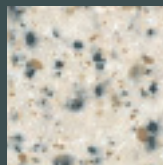
FANTASY | STONE | WOOD



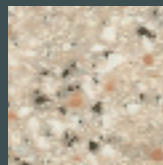
| SL 239 C |
marble manila



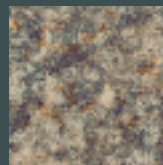
| GT 269 C |
granite polar



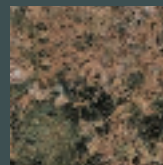
| FM 322 Fb |
grey flint



| FN 371 Fb |
sand stone flint



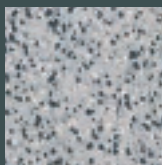
| G 169 C |
granite walnut



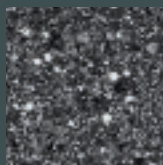
| GT 741 C |
granite baltik



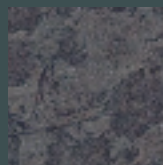
| ME 478 Fs |
brushed stainless
steel



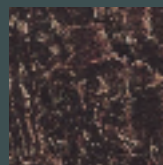
| FU 294 Fb |
pina grey



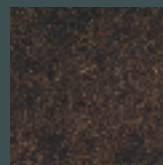
| ST 12 C |
stone black white



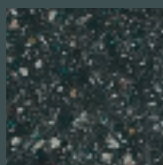
| C 127 Fb |
marble italy



| Ci 136 C |
granite chestnut



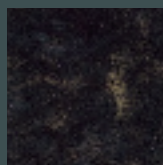
| LE 734 Pe |
makalu



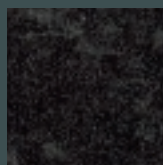
| FM 137 Fb |
midnight magic



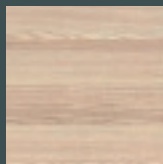
| RS 431 C |
grey speckle



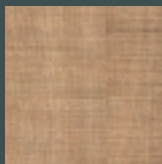
| KP 116 C |
kleopatra black
gold



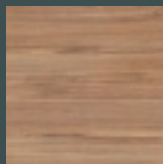
| BT 144 C |
moon star



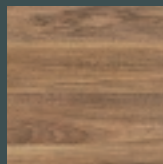
| BBL 355 PoF |
coimbra



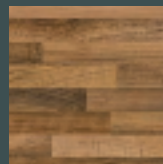
| EIS 344 PoF |
oak rough sawn



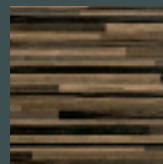
| BU 725 PoF |
master beech



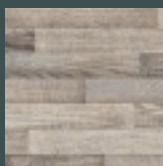
| NU 374 PoF |
nut tree bright
rustic



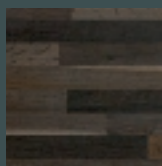
| NU 742 PoF |
nut tree
butcherblock



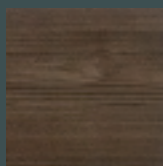
| BBL 739 PoF |
butcherblock
wenge



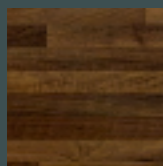
| BBL 242 PoF |
ajaccio oak



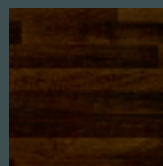
| Ei 396 PoF |
smoke oak
butcherblock



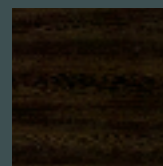
| KA 771 PoF |
chestnut oviedo



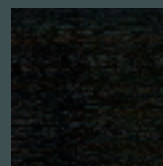
| BBL 467 PoF |
stab butcherblock
walnut



| BBL 714 PoF |
noce butcherblock

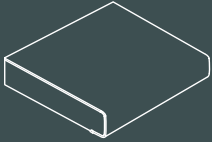


| WE 716 PoF |
wenge



| Ei 711 PoF |
belfort oak

AF 40/133 | DESIGN



SINGLE-POSTFORMED

4100 x 600/650/900/1200 x 39 mm (Surface finish Cr, Sc, Rc, T)

5200 x 600/650/900/1200 x 39 mm (Surface finish Rc only)

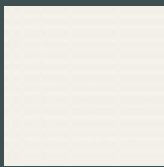
DOUBLE-POSTFORMED

4100 x 670/900/1200 x 39 mm

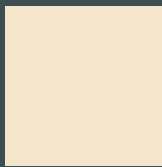
5200 x 670/900/1200 x 39 mm



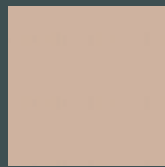
CRYSTAL | ROCA | SCIVARO | TESSUTTO



| A 242 Cr |
plain white



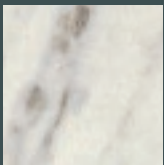
| A 320 Cr |
sand



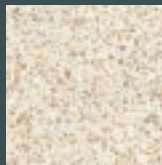
| A 332 Cr |
cappuccino



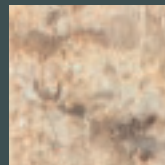
| A 1 Cr |
black



| C 242 Rc |
carrara royal



| GN 244 Rc |
fabrini beige



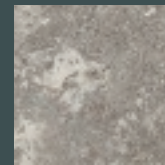
| SL 335 Rc |
marble alhambra



| C 438 Cr |
kamala grey



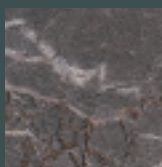
| H 442 Rc |
pietra piacentina



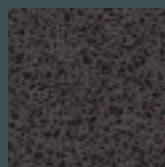
| C 413 Cr |
arathea concrete



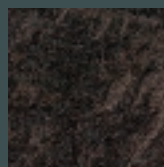
| BN 441 Cr |
copperfield



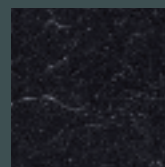
| SL 120 Sc |
marble marquina
brown grey



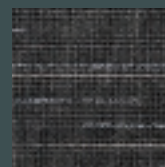
| GN 711 Rc |
fabrini anthrazit



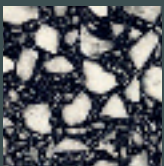
| BT 750 Sc |
pindos slate



| BN 112 Sc |
marble marquina
caviar grey



| L 441 T |
brown line



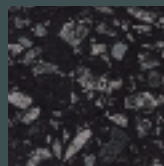
| MK 112 Cr |
tessera black white



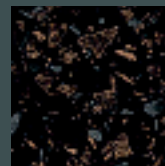
| MK 214 Cr |
terrazzo stone



| MK 155 Rc |
tiziano

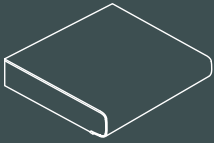


| MK 171 Cr |
terrazzo black



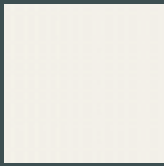
| MK 194 Cr |
terrazzo adige

AF 40/113 | HIGHGLOSS



SINGLE-POSTFORMED
4100 x 600/650/900/1200 x 39 mm

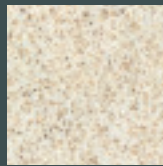
DOUBLE-POSTFORMED
4100 x 670/900/1200 x 39 mm



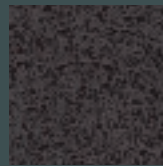
| A 242 Brill |
plain white



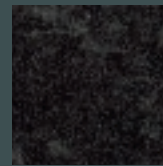
| A 505 Brill |
glass green



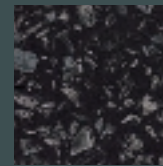
| GN 244 Brill |
fabriani beige



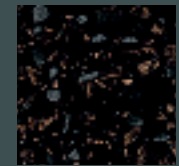
| GN 711 Brill |
fabriani anthrazit



| BT 144 Brill |
moon star



| MK 171 Brill |
terrazzo black

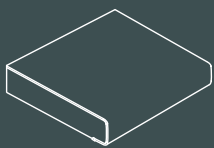


| MK 194 Brill |
terrazzo adige



| BBL 739 Brill |
butcherblock
wenge

AF 40/133 | DIGITAL



SINGLE-POSTFORMED
4100 x 600/650/900/1200 x 39 mm

DOUBLE-POSTFORMED
4100 x 670/900/1200 x 39 mm



| AN 340 PoF |
apple heartwood



| BU 392 PoF |
red core beech light

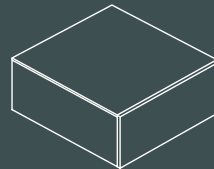
AF 40/HPL/PP/EFFECT | 40 mm edged



SINGLE-EDGED
4100 x 600/650/900/1200 x 39 mm

DOUBLE-EDGED
4100 x 670/900/1200 x 39 mm

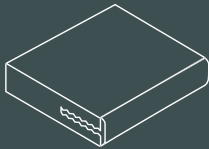
AF 60/HPL/PP/EFFECT | 60 mm edged



SINGLE-EDGED
4100 x 600/650/900/1200 x 59 mm

DOUBLE-EDGED
4100 x 670/900/1200 x 59 mm

AF 40/ALU | 40 mm edged



SINGLE-EDGED
4100 x 600/650/900/1200 x 39 mm

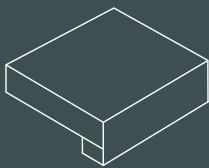
DOUBLE-EDGED
4100 x 670/900/1200 x 39 mm



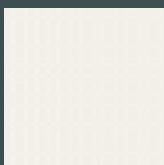
Try and create your own kitchen design via our CutDesign programme, www.westag.co.uk or by using the downloadable ORDER-FORMS.

All Square lipped worktops are available in all 60 decors, either single-sided or dual-sided.

AF 60/WT | VANITY TOPS



SINGLE-EDGED
ST 750 x 580 x 58 mm
ST 1000 x 580 x 58 mm



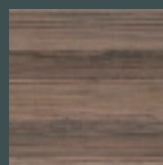
| A 242 Brill |
plain white



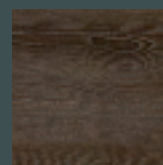
| C 438 Cr |
kamala grey



| ES 295 PoF |
ash tree messina



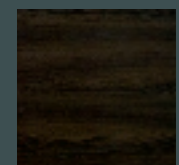
| BB 924 PoF |
talisa plum



| ES 721 PoF |
ash tree sedan



| Zo 715 PoF |
onde



| WE 716 PoF |
wenge

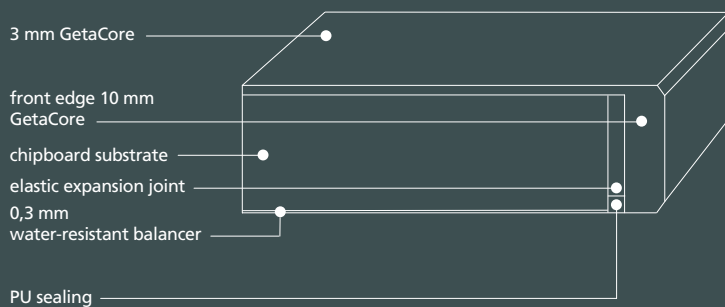
Wallback panels and UpStands are available in all 60 decors.
For exact availability please see decor stock-code guide page 36-38.



SOLID SURFACE MATERIAL

Tangible functional advantages and its innovative, aesthetic appearance make GetaCore® an ideal modern material for worksurfaces. The surface is non-porous and very easy to clean and maintain. Corner connections can be designed with seamless joints – good for maintenance, pleasing to the eye. GetaCore® can be processed like solid wood. For instance, the surface can be very finely sanded. The advantage: minor traces of use or damage can be simply removed – and your worktop is as good as new.

Product specification



In accordance with our warranty manual – available from your distributor.

Quality features



food safe to EN 1186 and EN 13130



easy to clean and hygienic



resistant to common household chemicals to ISO 19712



seamless joints



heat resistant up to 180° C to ISO 19712



can be repaired and touch sanded



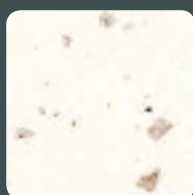
light fast wool standard level 6 to ISO 105-B02 and ISO 105-A02



warm to the touch due to the nature of the product

FINE & COARSE | MODERN CLASSIC

GetaCore® Solid Surface kitchen worktops create a unique style in every home. Going for the GetaCore® Solid Surface decors Fine structured assures an elegant smooth look of your kitchen. With Coarse structured decors in modern chocolate & cappuccino trends perfectly harmonious with nearly any wood tones a perfect warm and at the same time modern look of your kitchen can be achieved.



| GC 2388 |
miracle beach



| GC 3434 |
miracle vanilla



| GC 3391 |
miracle dune



| GC 2417 |
frosted white



| GC 4143 |
frosted dust



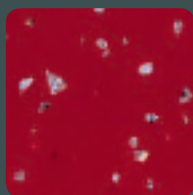
| GC 2423 |
miracle sand



| GC 3210 |
miracle desert



| GC 4282 |
miracle elephant



| GC 6291 |
miracle love



| GC 1122 |
frosted dark



| GC 1112 |
frosted space



| GC 1472 |
miracle stone



Decor guide see page 32–33.

For exact availability please see decor stock-code guide page 40–41.



Photo: GetaCore® kitchen worktop decor GC 2417.



Photo: GetaCore® kitchen worktop decor GCS 434.



Feel like star with a GetaCore® Star decor worktop, giving your kitchen a great looking metallica-effect. Add stunning stone impressions to your kitchen design by selecting a large crunchies decor like Terrazzo or Raindrops.



| GCT 236 |
terrazzo crystal



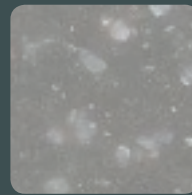
| GCTR 29 |
raindrops rain



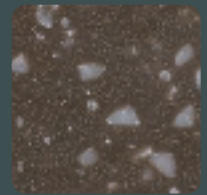
| GCR 342 |
raindrops cappuccino



| GCS 434 |
star medium grey



| GCR 427 |
raindrops greige



| GCR 783 |
raindrops coffee



| GCS 692 |
star sevilla red



| GCTR 18 |
raindrops anthracite



| GCS 189 |
star anthracite

Decor guide see page 32–33.

For exact availability please see decor stock-code guide page 40–41.

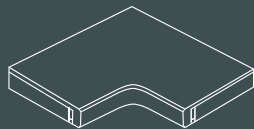
SINK MODULES | VARIETY OF COMBINATIONS



Photo: GetaCore® kitchen worktop decor GC 1122 with Carron Phoenix kitchen sink Lavella 150 U.



| AF 40/GetaCore® |
one piece corner top
angled-front-edge



| AF 40/GetaCore® |
one piece corner top
l-form



| AF 50/GetaCore® |
one piece corner top
angled-front-edge



| AF 50/GetaCore® |
one piece corner top
l-form



Put the right mix into your kitchen by combining contrasting GetaCore® Solid Surface or Granite (by Carron Phoenix) uni decors with a fine or coarse structured GetaCore® drainer-area or worktop. There is also a selection of sink-modules – GetaCore® drainer-areas – designed for the authentic kitchen-look when combined with modern stainless steel sinks.

FULL GETACORE® SOLID SURFACE SINK-MODULES

e.g. Type 1, i.e. a full bowl and a 1/2-sink, GC2011 white



GETACORE® SINK-MODULE FOR STAINLESS STEEL SINKS

i.e. 10 mm GetaCore drainer area GC4282 with a cut-out for e.g. Carron Phoenix Lavella 150U



GETACORE SINK-MODULE FOR GRANITE SINKS

i.e. 10 mm GetaCore drainer area GC3434 with a cut-out for e.g. Carron Phoenix Fiji 150U

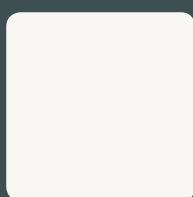


Try and create your own kitchen design via our CutDesign programme, www.westag.co.uk or by using the downloadable ORDER-FORMS.

GetaCore® worktops can be supplied with cut-outs for Granite undermounts (under the 3 mm GetaCore® worktop surface) or insets into the worktop, e.g. for Carron Phoenix ZX. GetaCore® worktops with 10 mm drainer-areas and cut-outs for Ceramic (Belfast) sinks are also available.

BATHROOM TOPS | WARM & SOFT TOUCH

Made from the same GetaCore® Solid Surface material bathroom tops offer the same quality features as kitchen tops. A neat seamless joint is possible and brings aesthetic beauty to any bathroom. GetaCore® can also be used to create shower walls, bathroom bowls, bathroom plinths, mirror frames and many more stunning design possibilities.



| GC 2011 |
titan white



| GC 2417 |
frosted white



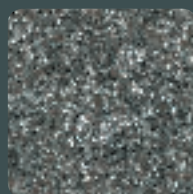
| GC 4143 |
frosted dust



| GC 2423 |
miracle sand



| GC 3210 |
miracle desert



| GC 4712 |
frosted grey



| GC 1112 |
frosted space



| GC 1001 |
vienna black

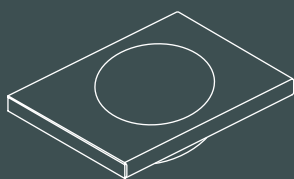


Decor guide see page 32–33.

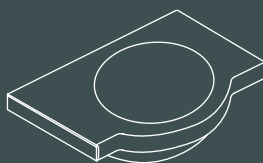
For exact availability please see decor stock-code guide page 44.



Photo: GetaCore® bathroom top decor GC 4712 with bowl SO 465/335 GC 2011 white and cowl GC 4712.



| AF 30/GetaCore® |
straight edged and bowl

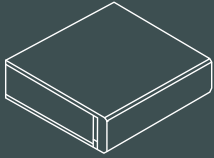


| AF 30/GetaCore® |
bowl and cowl



| AF 30/GetaCore® |
2 bowls and 2 cowls

AF 40/GC | WORKTOPS



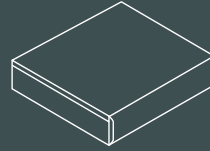
SINGLE-EDGED

4100 x 600/650/900/1200 x 38,3 mm

DOUBLE-EDGED

4100 x 670/900/1200 x 38,3 mm

AF 30/GC | BATHROOM TOPS



STRAIGHT-EDGED

ST 4100 x 330 x 28,7 mm

ST 4100 x 530 x 28,7 mm

CURVED FRONT

ST 4100 x 525 x 28,7 mm

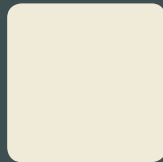
UNI



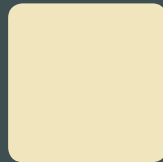
| GC 2011 |
titan white



| GC 2002 |
cream white



| GC 2007 |
pergamon



| GC 3001 |
cream yellow



| GC 4002 |
london grey



| GC 9001 |
orange tree



| GC 4001 |
new york grey



| GC 6001 |
sevilla red



| GC 7001 |
lounge brown

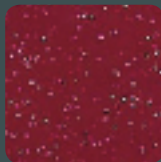


| GC 1001 |
vienna black

STAR | TERRAZZO | RAINDROPS



| GCS 434 |
star medium grey



| GCS 692 |
star sevilla red



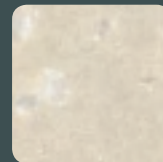
| GCS 189 |
star anthracite



| GCT 236 |
terrazzo crystal



| GCT 713 |
terrazzo toffee



| GCTR 29 |
raindrops rain



| GCR 342 |
raindrops cappuccino



| GCR 529 |
raindrops aqua



| GCR 427 |
raindrops greige



| GCTR 41 |
raindrops concrete



| GCR 783 |
raindrops coffee



| GCTR 18 |
raindrops anthracite



FINE | COARSE



| GC 2269 |
frosted cloud



| GC 2388 |
miracle beach



| GC 2968 |
miracle ice



| GC 3391 |
miracle dune



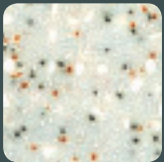
| GC 3434 |
miracle vanilla



| GC 2417 |
frosted white



| GC 2232 |
frosted light



| GC 2371 |
miracle white



| GC 3961 |
miracle feather



| GC 2423 |
miracle sand



| GC 5292 |
miracle jade



| GC 4143 |
frosted dust



| GC 5452 |
frosted camel



| GC 8421 |
frosted blue



| GC 9923 |
frosted vanilla



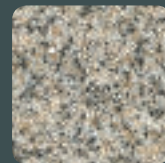
| GC 3210 |
miracle desert



| GC 7940 |
miracle caramel



| GC 7312 |
frosted sand



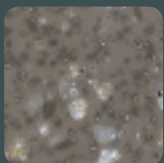
| GC 3172 |
frosted coffee



| GC 6421 |
miracle coral



| GC 6721 |
miracle red



| GC 4534 |
miracle concrete



| GC 4282 |
miracle elephant



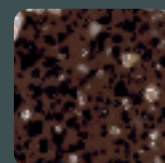
| GC 6291 |
miracle love



| GC 6172 |
frosted wine



| GC 7761 |
frosted tobacco



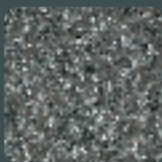
| GC 7163 |
miracle chocolate



| GC 7754 |
miracle toffee



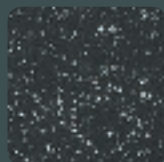
| GC 4621 |
miracle grey



| GC 4712 |
frosted grey



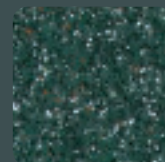
| GC 1062 |
miracle black



| GC 1122 |
frosted dark



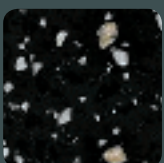
| GC 8821 |
frosted night



| GC 5311 |
frosted brasil



| GC 1112 |
frosted space



| GC 1472 |
miracle stone

Wallback panels and UpStands are available in all GC decors.
For exact availability please see decor stock-code guide page 40–41/44.

GENERAL INFORMATION

Westag & Getalit AG is a leading European manufacturer of wood and plastic products based in Rheda-Wiedenbrück, Germany. Our three divisions Plywood/Formwork, Doors/Frames, Laminates/Elements offer customised solutions from a single source. Our flexible, state-of-the-art production and sophisticated logistics enable us to meet our customers' demand for affordable, high-quality products with short delivery times.



ENVIRONMENT-FRIENDLY PRODUCTION

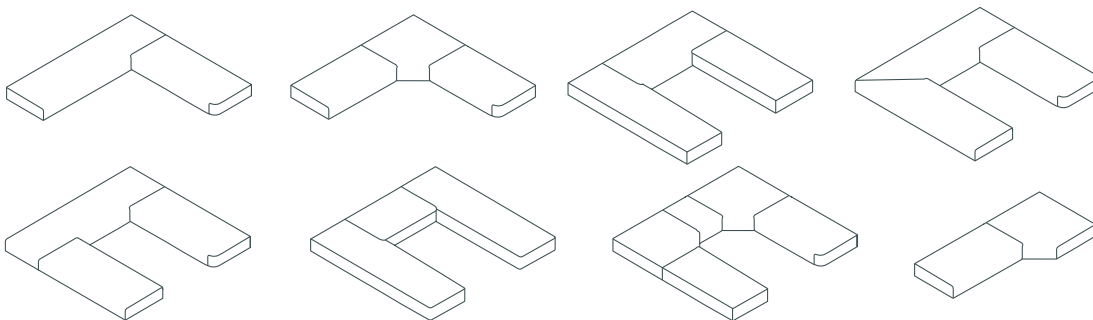
Westag & Getalit works with the energetic utilization of environmental friendly, sustainable raw material sources and gains the complete power requirements from an ultra modern cogeneration unit (CHP - combined heat and power). Surplus electricity production is fed directly into the public power supply network. This way Westag & Getalit helps save and optimise natural resources.



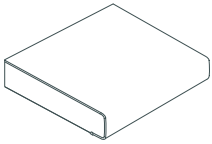
ISO 9001 CERTIFICATION

Westag & Getalit fully complies with the international management standards (DIN EN ISO 9001:2000). The uncompromising monitoring of this philosophy and production is focused on during Westag & Getalit's every day workflows. This is not only conducted out by our own laboratory, but also by the competence of external and independent audit teams.

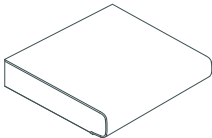
BESPOKE CUT & EDGED WORKTOPS



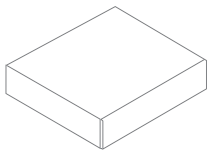
Westag & Getalit offers a selection of cut-to-size and even completely finished worktops via an individually programmed software package called CutDesign. CutDesign has been developed for all worktop requirements, if kitchen industry, retail trade – anything. This unique step-by-step software programme efficiently takes you through the complete worktop cut-to-size and cut-&edge process. Starting with the kitchen layout selection and finishing with a comprehensive drawing and specification – all created entire within the CutDesign software programme – available also on your computer – or – even via the internet – see our website www.westag.co.uk.



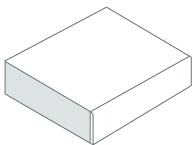
AF 40/133 | TRI Line Profile 38 mm chipboard type P2 to DIN EN 312, face side and front edge faced with 0.7 mm GetaLit (HPL), front edge postformed - radius 4 mm, reverse side and rear edge protected with moisture-resistant paper foil. Moisture-resistant resin seal at joint along front edge.



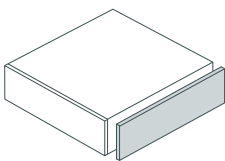
AF 40/113 Brill | HighGloss Profile 38 mm chipboard type P2 to DIN EN 312, face side and front edge faced with 0.8 mm GetaLit (HPL) in Brilliant Gloss finish. Front edge postformed – radius 7 mm. Reverse side and rear edge protected with moisture-resistant paper foil. Moisture-resistant resin seal at joint along front edge.



AF 40/HPL-edged | AF 40/PP-edged 38 mm moisture-resistant chipboard type P2 to DIN EN 312, face side faced with 0.7 mm GetaLit® (HPL), front edge lipped with 0.7 mm GetaLit® (HPL) edge or 1.5 mm PP-edge. Reverse side and rear edge protected with moisture-resistant paper foil.



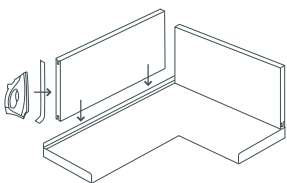
AF 60/HPL-edged | AF 60/PP-edged 58 mm moisture-resistant chipboard P3 to DIN EN 312, face side faced with 0.7 mm GetaLit® (HPL), front edge lipped with 0.7 mm GetaLit® (HPL) edge or 1.5 mm PP-edge. Reverse side and rear edge protected with moisture-resistant paper foil.



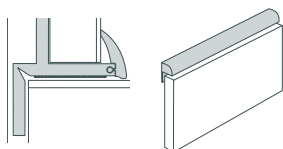
GetaLit®-Edges High-pressure decorative laminate edges according to DIN EN 438. Size 2040/4100 x 45 x 0.7 (0.8) mm (for worktops).

GetaLit® flex-Edges Two layer polyester based continuous laminate (colour co-ordinated). Type SB = Reverse with hot-melt adhesive.

PP-Edges | PP-Effect-Edges 1,5 mm PP-edges, either decor matching or in different designs for an individual style of the worktop.

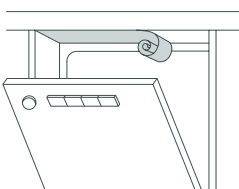


Wallback Panels | UpStands 12 mm chipboard P2 to DIN EN 312, faced both sides with high-pressure laminate GetaLit® (HPL), (0.7 mm standard, 0.8 mm HighGloss finish), face side decorative side, reverse side decor to our option. Thickness 13.4 and 13.6 mm respectively, including 2 x GetaLit® flex edging strips (lengths 2040 mm, width 22 mm).



Wall panelling | fixing Profile Hard PVC moulding with coloured soft lip. Available decors A15 anthracite and A420 light grey.

Aluminium Wallback Panel Bead For a shapely end solution of wall panelling.



Moisture Barrier to protect the worktop's reverse side near to cut-outs, ovens and dishwashers.

DECOR STOCK-CODE GUIDE

DECOR	2040 x 600 x 39 mm (spf)	2040 x 650 x 39 mm (spf)	2040 x 670 x 39 mm (dpf)	2040 x 900 x 39 mm (spf)	2590 x 600 x 39 mm (spf)	2590 x 650 x 39 mm (spf)	3140 x 600 x 39 mm (spf)	3140 x 650 x 39 mm (spf)	4100 x 600 x 39 mm (spf)	4100 x 650 x 39 mm (spf)	4100 x 670 x 39 mm (dpf)	4100 x 900 x 39 mm (spf)	4100 x 900 x 39 mm (dpf)	4100 x 1200 x 39 mm (spf)	4100 x 1200 x 39 mm (dpf)	5200 x 600 x 39 mm (spf)	5200 x 650 x 39 mm (spf)	5200 x 670 x 39 mm (dpf)	5200 x 900 x 39 mm (spf)	5200 x 900 x 39 mm (dpf)	5200 x 1200 x 39 mm (spf)	5200 x 1200 x 39 mm (dpf)	matching 40/60 mm HPL-Edge	matching 40 mm PP-Edge	CUTDESIGN® Cut & Edge	GetaLit HPL Edge 4100 x 45 x 0,7 mm	GetaLit flex Edge 5000 x 22 x 0,3 mm	PP-Edge 5000/250000 x 43 x 1,5 mm	Upstand 4100 x 150 x 13,4 mm	Wallback Panel 4100 x 650/1310 x 13,4 mm		
AF GT 40/133 TRI LINE PROFILE															SQ. LIPPED	CD	EDGES			WBP												
FANTASY																																
LE 734 Pe	ST	ST	ST						ST	SP	ST	SP	ST	SP	SP	SP	SP	SP	SP	SP	SP	SP	SP	SP	SP	CD	ST	ST		ST	SP	
ME 478 Fs	ST	ST	ST						ST	SP	ST	SP	ST	SP	SP										SP	SP	CD	ST	ST	SP	ST	SP
RS 431 C	ST	ST	ST						ST	SP	ST	SP	ST	SP	SP	SP	SP	SP	SP	SP	SP	SP	SP	SP	SP	SP	CD	ST	ST	SP	ST	SP
STONE																																
BT 144 C	ST	ST	ST	ST	ST	ST	ST	ST	ST	SP	ST	SP	ST	SP	SP	ST	ST	SP	SP	SP	SP	SP	SP	SP	SP	SP	CD	ST	ST	SP	ST	SP
Ci 136 C	ST	ST	ST	ST	ST	ST	ST	ST	ST	SP	ST	SP	ST	SP	SP	ST	ST	SP	SP	SP	SP	SP	SP	SP	SP	SP	CD	ST	ST		ST	SP
G 169 C	ST	ST	ST	ST	ST	ST	ST	ST	ST	SP	ST	SP	ST	SP	SP	ST	ST	SP	SP	SP	SP	SP	SP	SP	SP	SP	CD	ST	ST		ST	SP
GT 269 C	ST		ST	ST					ST	SP	ST	SP	ST	SP	SP	SP	SP	SP	SP	SP	SP	SP	SP	SP	SP	SP	CD	ST	ST		ST	SP
GT 741 C	ST	ST	ST	ST	ST	ST	ST	ST	ST	SP	ST	SP	ST	SP	SP	ST	ST	SP	SP	SP	SP	SP	SP	SP	SP	SP	CD	ST	ST	SP	ST	SP
KP 116 C	ST	ST	ST	ST	ST	ST	ST	ST	ST	SP	ST	SP	ST	SP	SP	ST	ST	SP	SP	SP	SP	SP	SP	SP	SP	SP	CD	ST	ST		ST	SP
SL 239 C	ST	ST	ST	ST	ST	ST	ST	ST	ST	SP	ST	SP	ST	SP	SP	ST	ST	SP	SP	SP	SP	SP	SP	SP	SP	SP	CD	ST	ST	SP	ST	SP
ST 12 C	ST		ST	ST					ST	SP	ST	SP	ST	SP	SP	SP	SP	SP	SP	SP	SP	SP	SP	SP	SP	SP	CD	ST	ST	SP	ST	SP
C127 Fb	ST	ST	ST	ST	ST	ST	ST	ST	ST	SP	ST	SP	ST	SP	SP	ST	ST	SP	SP	SP	SP	SP	SP	SP	SP	SP	CD	ST	ST		ST	SP
FM 137 Fb	ST	ST	ST	ST	ST	ST	ST	ST	ST	SP	ST	SP	ST	SP	SP	ST	ST	SP	SP	SP	SP	SP	SP	SP	SP	SP	CD	ST	ST	SP	ST	SP
FM 322 Fb	ST	ST	ST	ST	ST	ST	ST	ST	ST	SP	ST	SP	ST	SP	SP	ST	ST	SP	SP	SP	SP	SP	SP	SP	SP	SP	CD	ST	ST	SP	ST	SP
FN 371 Fb	ST	ST	ST	ST	ST	ST	ST	ST	ST	SP	ST	SP	ST	SP	SP	ST	ST	SP	SP	SP	SP	SP	SP	SP	SP	SP	CD	ST	ST	SP	ST	SP
FU 294 Fb	ST		ST	ST					ST	SP	ST	SP	ST	SP	SP	SP	SP	SP	SP	SP	SP	SP	SP	SP	SP	SP	CD	ST	ST	SP	ST	SP
WOOD																																
BBL 242 PoF	ST	ST	ST	ST	ST	ST	ST	ST	ST	SP	ST	SP	ST	SP	SP	ST	ST	SP	SP	SP	SP	SP	SP	SP	SP	SP	CD	ST	ST		ST	SP
BBL 355 PoF	ST		ST	ST					ST	SP	ST	SP	ST	SP	SP	SP	SP	SP	SP	SP	SP	SP	SP	SP	SP	SP	CD	ST	ST		ST	SP
BBL 467 PoF	ST		ST	ST					ST	SP	ST	SP	ST	SP	SP	SP	SP	SP	SP	SP	SP	SP	SP	SP	SP	SP	CD	ST	ST	SP	ST	SP
BBL 714 PoF	ST	ST	ST	ST	ST	ST	ST	ST	ST	SP	ST	SP	ST	SP	SP	ST	ST	SP	SP	SP	SP	SP	SP	SP	SP	SP	CD	ST	ST	SP	ST	SP
BBL 739 PoF	ST	ST	ST	ST	ST	ST	ST	ST	ST	SP	ST	SP	ST	SP	SP	ST	ST	SP	SP	SP	SP	SP	SP	SP	SP	SP	CD	ST	ST	SP	ST	SP
BU 725 PoF	ST		ST	ST					ST	SP	ST	SP	ST	SP	SP	SP	SP	SP	SP	SP	SP	SP	SP	SP	SP	SP	CD	ST	ST		ST	SP
Ei 396 PoF	ST	ST	ST	ST	ST	ST	ST	ST	ST	SP	ST	SP	ST	SP	SP	ST	ST	SP	SP	SP	SP	SP	SP	SP	SP	SP	CD	ST	ST		ST	SP
Ei 711 PoF	ST		ST	ST					ST	SP	ST	SP	ST	SP	SP	SP	SP	SP	SP	SP	SP	SP	SP	SP	SP	SP	CD	ST	ST	SP	ST	SP
EIS 344 PoF	ST		ST	ST					ST	SP	ST	SP	ST	SP	SP											SP	CD	ST	ST		ST	SP
KA 771 PoF	ST		ST	ST					ST	SP	ST	SP	ST	SP	SP	SP	SP	SP	SP	SP	SP	SP	SP	SP	SP	SP	CD	ST	ST		ST	SP
NU 374 PoF	ST	ST	ST	ST	ST	ST	ST	ST	ST	SP	ST	SP	ST	SP	SP	ST	ST	SP	SP	SP	SP	SP	SP	SP	SP	SP	CD	ST	ST		ST	SP
NU 742 PoF	ST	ST	ST	ST	ST	ST	ST	ST	ST	SP	ST	SP	ST	SP	SP	ST	ST	SP	SP	SP	SP	SP	SP	SP	SP	SP	CD	ST	ST	SP	ST	SP
WE 716 PoF	ST	ST	ST	ST	ST	ST	ST	ST	ST	SP	ST	SP	ST	SP	SP	ST	ST	SP	SP	SP	SP	SP	SP	SP	SP	SP	CD	ST	ST		ST	SP
AF GT 40/133 DIG DIGITAL															SQ. LIPPED	CD	EDGES			WBP												
DESIGN WOOD																																
AN 340 PoF	ST		ST	ST					ST	SP	ST	SP	ST	SP	SP												CD	ST	ST		ST	SP
BU 392 PoF	ST		ST	ST					ST	SP	ST	SP	ST	SP	SP												CD	ST	ST		ST	SP

ST = STOCK items, lead time ca. 2–3 days

SP = SPECIAL order items, lead time ca. 2–3 weeks

CD = available cut and edged via our CutDesign

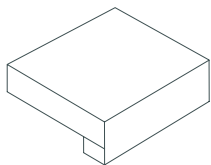
Software programme, lead time ca 2–3 weeks

(spf) = single-postformed or single-edged

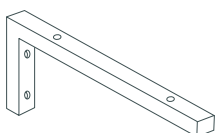
(dpf) = double-postformed or double-edged

DECOR	2040 x 600 x 39 mm (spf)	2040 x 650 x 39 mm (spf)	2040 x 670 x 39 mm (dpf)	2040 x 900 x 39 mm (spf)	2590 x 600 x 39 mm (spf)	2590 x 650 x 39 mm (spf)	3140 x 600 x 39 mm (spf)	3140 x 650 x 39 mm (spf)	4100 x 600 x 39 mm (spf)	4100 x 650 x 39 mm (spf)	4100 x 670 x 39 mm (dpf)	4100 x 900 x 39 mm (spf)	4100 x 900 x 39 mm (dpf)	4100 x 1200 x 39 mm (spf)	4100 x 1200 x 39 mm (dpf)	5200 x 600 x 39 mm (spf)	5200 x 650 x 39 mm (spf)	5200 x 670 x 39 mm (dpf)	5200 x 900 x 39 mm (spf)	5200 x 900 x 39 mm (dpf)	5200 x 1200 x 39 mm (spf)	5200 x 1200 x 39 mm (dpf)	matching 40/60 mm HPL-Edge	matching 40 mm PP-edge	CUTDESIGN® Cut & Edge	Getalit HPL Edge 4100 x 45 x 0,7 mm	Getalit flex Edge 5000 x 22 x 0,3 mm	PP-Edge 5000/250000 x 43 x 1,5 mm	Upstand 4100 x 150 x 13,4 mm	Wallback Panel 4100 x 650/1310 x 13,4 mm		
AF GT 40/133 DS DESIGN																						SQ. LIPPED	CD	EDGES			WBP					
CRYSTAL																																
A 1 Cr	ST	ST	ST						ST	SP	ST	SP	ST	SP	SP									SP		CD	ST	ST		ST	SP	
A 242 Cr	ST	ST	ST						ST	SP	ST	SP	ST	SP	SP									SP	SP	CD	ST	ST	SP	ST	SP	
A 320 Cr	ST	ST	ST						ST	SP	ST	SP	ST	SP	SP									SP	SP	CD	ST	ST	SP	ST	SP	
A 332 Cr	ST	ST	ST						ST	SP	ST	SP	ST	SP	SP									SP		CD	ST	ST		ST	SP	
BN 441 Cr	ST	ST	ST						ST	SP	ST	SP	ST	SP	SP									SP	SP	CD	ST	ST	SP	ST	SP	
C 413 Cr	ST	ST	ST						ST	SP	ST	SP	ST	SP	SP									SP	SP	CD	ST	ST	SP	ST	SP	
C 438 Cr	ST	ST	ST						ST	SP	ST	SP	ST	SP	SP									SP		CD	ST	ST		ST	SP	
MK 112 Cr	ST	ST	ST						ST	SP	ST	SP	ST	SP	SP									SP		CD	ST	ST		ST	SP	
MK 171 Cr	ST	ST	ST						ST	SP	ST	SP	ST	SP	SP									SP		CD	ST	ST		ST	SP	
MK 194 Cr	ST	ST	ST						ST	SP	ST	SP	ST	SP	SP									SP		CD	ST	ST		ST	SP	
MK 214 Cr	ST	ST	ST						ST	SP	ST	SP	ST	SP	SP									SP		CD	ST	ST		ST	SP	
ROCA																																
C 242 Rc	ST	ST	ST						ST	SP	ST	SP	ST	SP	SP	SP	SP	SP	SP	SP	SP	SP	SP	SP	SP	SP	CD	ST	ST		ST	SP
GN 244 Rc	ST	ST	ST						ST	SP	ST	SP	ST	SP	SP	SP	SP	SP	SP	SP	SP	SP	SP	SP	SP	SP	CD	ST	ST		ST	SP
GN 711 Rc	ST	ST	ST						ST	SP	ST	SP	ST	SP	SP	SP	SP	SP	SP	SP	SP	SP	SP	SP	SP	SP	CD	ST	ST		ST	SP
H 442 Rc	ST	ST	ST	ST	ST	ST	ST	ST	ST	SP	ST	SP	ST	SP	SP	ST	ST	SP	SP	SP	SP	SP	SP	SP	SP	SP	CD	ST	ST		ST	SP
MK 155 Rc	ST	ST	ST	ST	ST	ST	ST	ST	ST	SP	ST	SP	ST	SP	SP	ST	ST	SP	SP	SP	SP	SP	SP	SP	SP	SP	CD	ST	ST		ST	SP
SL 335 Rc	ST	ST	ST	ST	ST	ST	ST	ST	ST	SP	ST	SP	ST	SP	SP	ST	ST	SP	SP	SP	SP	SP	SP	SP	SP	SP	CD	ST	ST		ST	SP
SCIVARO																																
BN 112 Sc	ST	ST	ST						ST	SP	ST	SP	ST	SP	SP										SP		CD	ST	ST		ST	SP
BT 750 Sc	ST	ST	ST						ST	SP	ST	SP	ST	SP	SP										SP		CD	ST	ST		ST	SP
SL 120 Sc	ST	ST	ST						ST	SP	ST	SP	ST	SP	SP										SP		CD	ST	ST		ST	SP
TESSUTTO																																
L 441 T	ST	ST	ST						ST	SP	ST	SP	ST	SP	SP										SP		CD	ST	ST		ST	SP
AF GT 40/113 BRIL HIGHGLOSS																						SQ. LIPPED	CD	EDGES			WBP					
UNI																																
A 242 Bril	ST	ST	ST						ST	SP	ST	SP	ST	SP	SP										SP	SP	CD	ST	ST	SP	ST	SP
A 505 Bril	ST	ST	ST						ST	SP	ST	SP	ST	SP	SP										SP		CD	ST	ST		ST	SP
STONE																																
BT 144 Bril	ST	ST	ST						ST	SP	ST	SP	ST	SP	SP										SP	SP	CD	ST	ST	SP	ST	SP
GN 244 Bril	ST	ST	ST						ST	SP	ST	SP	ST	SP	SP										SP	SP	CD	ST	ST	SP	ST	SP
GN 711 Bril	ST	ST	ST						ST	SP	ST	SP	ST	SP	SP										SP		CD	ST	ST		ST	SP
MK 171 Bril	ST	ST	ST						ST	SP	ST	SP	ST	SP	SP										SP		CD	ST	ST		ST	SP
MK 194 Bril	ST	ST	ST						ST	SP	ST	SP	ST	SP	SP										SP		CD	ST	ST		ST	SP
WOOD																																
BBL 739 Bril	ST	ST	ST						ST	SP	ST	SP	ST	SP	SP										SP		CD	ST	ST		ST	SP

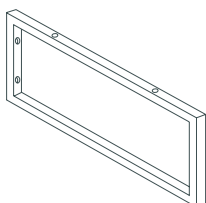
AF40 + AF60 Square lipped worktops are single- and dual-sided available in full boards 4100 mm. 60 mm Effect-Edge = PP 72675 Effect-Edges, as well as real Aluminium-Edges please see page 14.



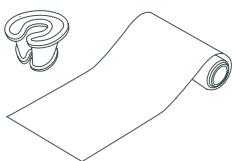
AF 60/WT | Vanity Tops 38 mm chipboard substrate type P2 to DIN EN 312, face edge and lateral edges with water-resistant frame construction, total thickness 59 mm. Face side and edges covered with GetaLit (HPL) 0,7 mm. Reverse side with water-repellent balancer.



Angle Console Type L Fixation panel, powder-coated for concealed fixation of GetaLit® vanity elements.



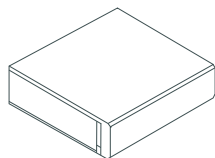
Rectangular Console Type R Rectangular fixing console, chromed with towelholder function for the visible fixation of GetaLit® washstands.



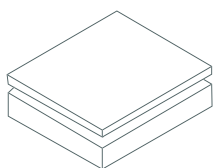
Sealing Set For assembly/sealing of mixing taps and basin cut-outs, consisting of rubber sealing sleeve and ALU adhesive foil.

DECOR STOCK-CODE GUIDE

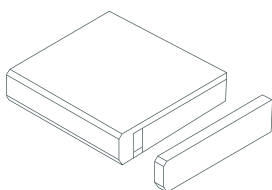
DECOR	750 x 500 x 59 mm	1000 x 500 x 59 mm	CUTDESIGN® Cut & edge	Angle Console Type L 440 x 160 x 40 mm	Rectangular Console Type R 440 x 200 x 20 mm	Sealing Set
AF 60/WT VANITY ELEMENTS						
UNI						
A 242 Brill	ST	ST	CD	ST	ST	ST
STONE						
C 438 Cr	ST	ST	CD	ST	ST	ST
WOOD						
BB 924 PoF	ST	ST	CD	ST	ST	ST
ES 295 PoF	ST	ST	CD	ST	ST	ST
ES 721 PoF	ST	ST	CD	ST	ST	ST
WE 716 PoF	ST	ST	CD	ST	ST	ST
ZO 715 PoF	ST	ST	CD	ST	ST	ST



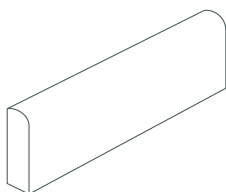
AF 40/GC Worktops 35 mm chipboard type P2 to DIN EN 312, faced with 3 mm GetaCore acrylic-bound solid surface material, wet sanded (P 600). Reverse side with 0.3 mm balancer, front edge 10 mm GetaCore with chamfered GetaCore edge, an elastic expansion joint between substrate and GetaCore® edge. Moisture-resistant resin seal at GetaCore/balancer joint along front edge.



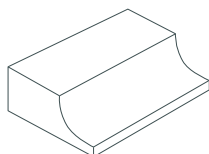
Sheet Material Acrylic resin bound Solid Surface material to ISO 19712, surface wet sanded (P 600), reverse side dry sanded (P 80)



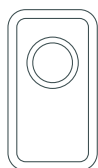
Edges 3 or 10 mm acrylic resin based solid surface material, surface wet sanded (P600) and reverse side dry sanded (P80). Concealed fixing by using GetaCore two-component adhesive.



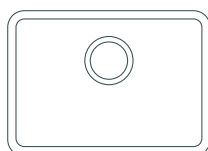
Wallback Panel Profile 10 mm solid profile with rounded front edge, 10 mm radius, surface: wet sanded (P600).



Coved Profile 4100 mm coved upstand-profile, suitable to create a radiused edge between worktop and wallback panel or upstand. Wet sanded surface finish (P600).



Kitchen Bowl GC-R-162 GetaCore bowls/basins without overflow drilling for flush installation under GetaCore worktops or 10 mm GetaCore slabs. Including sealing rubber sleeves.



Kitchen Bowl GC-R-450 GetaCore bowls/basins without overflow drilling for flush installation under GetaCore worktops or 10 mm GetaCore slabs. Including sealing rubber sleeves.

DECOR STOCK-CODE GUIDE

DECOR	SURFACE FINISH									ORDER FORMS/CD				SHEET MAT.		ACCESSORIES						Kitchen Bowl												
	AF 40/GC KITCHEN WORKTOPS			2040 x 600 x 38,3 mm (s-e)			2040 x 670 x 38,3 mm (d-e)			2040 x 900 x 38,3 mm (d-e)			2040/4100 mm Sink Module Tops			2040/4100 x 1250 x 3/10 mm		2040/4100 x 615 x 3/10 mm		2040/4100 x 45 x 3 mm GC Edge		2040/4100 x 35,7 x 10 mm GC Edge		2040/4100 x 45 x 10 mm GC Edge		2040/4100 x 202 x 10 mm GC Edge		4100 x 34 x 10 mm Wallback Panel Profile		4100 x 18 x 10 mm Coved Profile		Kitchen Bowl GC-R-450		Kitchen Bowl GC-R-162
UNI																																		
GC1001	WS				SP	SP	SP	SP	SP	SP	SP	SP	CD	CD	CD	CD	SP	SP	SP	SP	SP	SP	SP	SP	SP	SP	SP	SP	SP					
GC2002	WS				SP	SP	SP	SP	SP	SP	SP	SP	CD	CD	CD	CD	SP	SP	SP	SP	SP	SP	SP	SP	SP	SP	SP	SP	SP					
GC2007	WS				SP	SP	SP	SP	SP	SP	SP	SP	CD	CD	CD	CD	SP	SP	SP	SP	SP	SP	SP	SP	SP	SP	SP	SP	SP	SP	SP	SP		
GC2011	WS				SP	SP	SP	SP	SP	SP	SP	SP	CD	CD	CD	CD	SP	SP	SP	SP	SP	SP	SP	SP	SP	SP	SP	SP	SP	SP	SP	SP		
GC3001	WS				SP	SP	SP	SP	SP	SP	SP	SP	CD	CD	CD	CD	SP	SP	SP	SP	SP	SP	SP	SP	SP	SP	SP	SP	SP					
GC4001	WS				SP	SP	SP	SP	SP	SP	SP	SP	CD	CD	CD	CD	SP	SP	SP	SP	SP	SP	SP	SP	SP	SP	SP	SP	SP					
GC4002	WS				SP	SP	SP	SP	SP	SP	SP	SP	CD	CD	CD	CD	SP	SP	SP	SP	SP	SP	SP	SP	SP	SP	SP	SP	SP					
GC6001	WS				SP	SP	SP	SP	SP	SP	SP	SP	CD	CD	CD	CD	SP	SP	SP	SP	SP	SP	SP	SP	SP	SP	SP	SP	SP					
GC7001	WS				SP	SP	SP	SP	SP	SP	SP	SP	CD	CD	CD	CD	SP	SP	SP	SP	SP	SP	SP	SP	SP	SP	SP	SP	SP					
GC9001	WS				SP	SP	SP	SP	SP	SP	SP	SP	CD	CD	CD	CD	SP	SP	SP	SP	SP	SP	SP	SP	SP	SP	SP	SP	SP					
FINE																																		
GC1112	WS	ST	ST	ST	ST	SP	ST	SP	ST	SP	SP	CD	CD	CD	CD	SP	SP	ST	SP	SP	ST	SP	SP	SP	SP	SP	SP	SP	SP					
GC1122	WS				SP	SP	SP	SP	SP	SP	SP	CD	CD	CD	CD	SP	SP	SP	SP	SP	SP	SP	SP	SP	SP	SP	SP	SP	SP					
GC2232	WS				SP	SP	SP	SP	SP	SP	SP	CD	CD	CD	CD	SP	SP	SP	SP	SP	SP	SP	SP	SP	SP	SP	SP	SP	SP	SP	SP	SP		
GC2269	WS	ST	ST	ST	ST	SP	ST	SP	ST	SP	SP	CD	CD	CD	CD	SP	SP	ST	SP	SP	ST	SP	SP	SP	SP	SP	SP	SP	SP					
GC2417	WS	ST	ST	ST	ST	SP	ST	SP	ST	SP	SP	CD	CD	CD	CD	SP	SP	ST	SP	SP	ST	SP	SP	SP	SP	SP	SP	SP	SP	SP	SP	SP		
GC3172	WS				SP	SP	SP	SP	SP	SP	SP	CD	CD	CD	CD	SP	SP	SP	SP	SP	SP	SP	SP	SP	SP	SP	SP	SP	SP					
GC4143	WS				SP	SP	SP	SP	SP	SP	SP	CD	CD	CD	CD	SP	SP	SP	SP	SP	SP	SP	SP	SP	SP	SP	SP	SP	SP	SP	SP	SP		
GC4712	WS	ST	ST	ST	ST	SP	ST	SP	ST	SP	SP	CD	CD	CD	CD	SP	SP	ST	SP	SP	ST	SP	SP	SP	SP	SP	SP	SP	SP					
GC5311	WS	ST	ST	ST	ST	SP	ST	SP	ST	SP	SP	CD	CD	CD	CD	SP	SP	ST	SP	SP	ST	SP	SP	SP	SP	SP	SP	SP	SP					
GC5452	WS				SP	SP	SP	SP	SP	SP	SP	CD	CD	CD	CD	SP	SP	SP	SP	SP	SP	SP	SP	SP	SP	SP	SP	SP	SP					
GC6172	WS				SP	SP	SP	SP	SP	SP	SP	CD	CD	CD	CD	SP	SP	SP	SP	SP	SP	SP	SP	SP	SP	SP	SP	SP	SP					
GC7312	WS				SP	SP	SP	SP	SP	SP	SP	CD	CD	CD	CD	SP	SP	SP	SP	SP	SP	SP	SP	SP	SP	SP	SP	SP	SP					
GC8421	WS				SP	SP	SP	SP	SP	SP	SP	CD	CD	CD	CD	SP	SP	SP	SP	SP	SP	SP	SP	SP	SP	SP	SP	SP	SP	SP	SP	SP		
GC8821	WS				SP	SP	SP	SP	SP	SP	SP	CD	CD	CD	CD	SP	SP	SP	SP	SP	SP	SP	SP	SP	SP	SP	SP	SP	SP	SP	SP	SP		
GC9923	WS				SP	SP	SP	SP	SP	SP	SP	CD	CD	CD	CD	SP	SP	SP	SP	SP	SP	SP	SP	SP	SP	SP	SP	SP	SP	SP	SP	SP		
COARSE																																		
GC1062	WS				SP	SP	SP	SP	SP	SP	SP	CD	CD	CD	CD	SP	SP	SP	SP	SP	SP	SP	SP	SP	SP	SP	SP	SP	SP					
GC1472	WS	ST	ST	ST	ST	SP	ST	SP	ST	SP	SP	CD	CD	CD	CD	SP	SP	ST	SP	SP	ST	SP	SP	SP	SP	SP	SP	SP	SP					
GC2371	WS	ST	ST	ST	ST	SP	ST	SP	ST	SP	SP	CD	CD	CD	CD	SP	SP	ST	SP	SP	ST	SP	SP	SP	SP	SP	SP	SP	SP	SP	SP	SP		
GC2388	WS	ST	ST	ST	ST	SP	ST	SP	ST	SP	SP	CD	CD	CD	CD	SP	SP	ST	SP	SP	ST	SP	SP	SP	SP	SP	SP	SP	SP					
GC2423	WS	ST	ST	ST	ST	SP	ST	SP	ST	SP	SP	CD	CD	CD	CD	SP	SP	ST	SP	SP	ST	SP	SP	SP	SP	SP	SP	SP	SP					
GC2968	WS				SP	SP	SP	SP	SP	SP	SP	CD	CD	CD	CD	SP	SP	SP	SP	SP	SP	SP	SP	SP	SP	SP	SP	SP	SP					
GC3210	WS	ST	ST	ST	ST	SP	ST	SP	ST	SP	SP	CD	CD	CD	CD	SP	SP	ST	SP	SP	ST	SP	SP	SP	SP	SP	SP	SP	SP	SP	SP	SP		
GC3391	WS	ST	ST	ST	ST	SP	ST	SP	ST	SP	SP	CD	CD	CD	CD	SP	SP	ST	SP	SP	ST	SP	SP	SP	SP	SP	SP	SP	SP	SP	SP	SP		

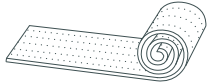
ST = STOCK items, lead time ca. 2–3 days
 SP = SPECIAL order items, lead time ca. 2–3 weeks

CD = available cut and edged via our CutDesign Software programme, lead time ca 2–3 weeks

(s-e) = single-edged
 (d-e) = double-edged

WS = wet sanded

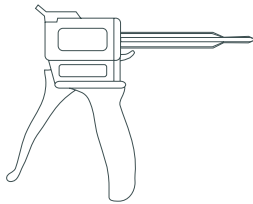
DECOR	SURFACE FINISH												ORDER FORMS/CD				SHEET MAT.		ACCESSORIES							
	AF 40/GC			KITCHEN WORKTOPS																						
COARSE																										
GC3434	WS	ST	ST	ST	ST	SP	ST	SP	ST	SP	ST	SP	CD	CD	CD	CD	SP	SP	ST	SP	SP	ST	SP	SP		
GC3961	WS	ST	ST	ST	ST	SP	ST	SP	ST	SP	ST	SP	CD	CD	CD	CD	SP	SP	ST	SP	SP	ST	SP	SP		
GC4282	WS	ST	ST	ST	ST	SP	ST	SP	ST	SP	ST	SP	CD	CD	CD	CD	SP	SP	ST	SP	SP	ST	SP	SP		
GC4534	WS				SP	SP	SP	SP	SP	SP	SP	SP	CD	CD	CD	CD	SP	SP	SP	SP	SP	SP	SP	SP		
GC4621	WS				SP	SP	SP	SP	SP	SP	SP	SP	CD	CD	CD	CD	SP	SP	SP	SP	SP	SP	SP	SP		
GC5292	WS				SP	SP	SP	SP	SP	SP	SP	SP	CD	CD	CD	CD	SP	SP	SP	SP	SP	SP	SP	SP		
GC6291	WS	ST	ST	ST	ST	SP	ST	SP	ST	SP	ST	SP	CD	CD	CD	CD	SP	SP	ST	SP	SP	ST	SP	SP		
GC6421	WS				SP	SP	SP	SP	SP	SP	SP	SP	CD	CD	CD	CD	SP	SP	SP	SP	SP	SP	SP	SP		
GC6721	WS				SP	SP	SP	SP	SP	SP	SP	SP	CD	CD	CD	CD	SP	SP	SP	SP	SP	SP	SP	SP	SP	SP
GC7163	WS				SP	SP	SP	SP	SP	SP	SP	SP	CD	CD	CD	CD	SP	SP	SP	SP	SP	SP	SP	SP		
GC7754	WS	ST	ST	ST	ST	SP	ST	SP	ST	SP	ST	SP	CD	CD	CD	CD	SP	SP	ST	SP	SP	ST	SP	SP		
GC7761	WS				SP	SP	SP	SP	SP	SP	SP	SP	CD	CD	CD	CD	SP	SP	SP	SP	SP	SP	SP	SP		
GC7940	WS				SP	SP	SP	SP	SP	SP	SP	SP	CD	CD	CD	CD	SP	SP	SP	SP	SP	SP	SP	SP		
STAR																										
GCS189	WS	ST	ST	ST	ST	SP	ST	SP	ST	SP	ST	SP	CD	CD	CD	CD	SP	SP	ST	SP	SP	ST	SP	SP		
GCS434	WS				SP	SP	SP	SP	SP	SP	SP	SP	CD	CD	CD	CD	SP	SP	SP	SP	SP	SP	SP	SP		
GCS692	WS				SP	SP	SP	SP	SP	SP	SP	SP	CD	CD	CD	CD	SP	SP	SP	SP	SP	SP	SP	SP		
TERRAZZO																										
GCT236	WS	ST	ST	ST	ST	SP	ST	SP	ST	SP	ST	SP	CD	CD	CD	CD	SP	SP	ST	SP	SP	ST	SP	SP		
GCT713	WS				SP	SP	SP	SP	SP	SP	SP	SP	CD	CD	CD	CD	SP	SP	SP	SP	SP	SP	SP	SP		
RAINDROPS																										
GCTR18	WS				SP	SP	SP	SP	SP	SP	SP	SP	CD	CD	CD	CD	SP	SP	SP	SP	SP	SP	SP	SP		
GCTR29	WS	ST	ST	ST	ST	SP	ST	SP	ST	SP	ST	SP	CD	CD	CD	CD	SP	SP	ST	SP	SP	ST	SP	SP		
GCTR41	WS	ST	ST	ST	ST	SP	ST	SP	ST	SP	ST	SP	CD	CD	CD	CD	SP	SP	ST	SP	SP	ST	SP	SP		
GCR342	WS	ST	ST	ST	ST	SP	ST	SP	ST	SP	ST	SP	CD	CD	CD	CD	SP	SP	ST	SP	SP	ST	SP	SP		
GCR427	WS				SP	SP	SP	SP	SP	SP	SP	SP	CD	CD	CD	CD	SP	SP	SP	SP	SP	SP	SP	SP		
GCR529	WS				SP	SP	SP	SP	SP	SP	SP	SP	CD	CD	CD	CD	SP	SP	SP	SP	SP	SP	SP	SP		
GCR783	WS	ST	ST	ST	ST	SP	ST	SP	ST	SP	ST	SP	CD	CD	CD	CD	SP	SP	ST	SP	SP	ST	SP	SP		



Cork Strip as an expansion joint for the 10 mm edge material.



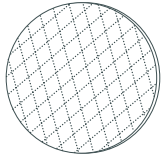
Acrylic Glue GetaCore 2-component acrylic glue / joint adhesive in 50 ml and 250 ml cartridges including 2 mixing nozzles, suitable for the cartridge size. Additional nozzles are essential when using the same GetaCore cartridge more than twice.



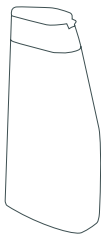
Special Glue Gun for GetaCore 2-component joint adhesive. Suitable for 50 ml or 250 ml system. Additional nozzles are essential when using the same GetaCore cartridge more than twice.



Additional Nozzles Replacement nozzles for 50/250 ml cartridges. Additional nozzles are essential when using the same GetaCore cartridge more than twice.



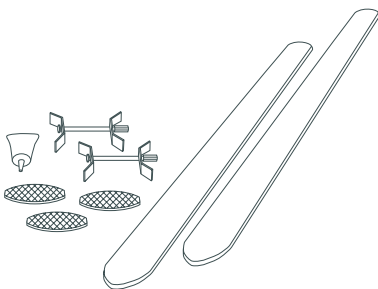
Sanding Pads Sanding Sets SemiMatt or HighGloss for surface finishing, compatible with all commercial random orbital sanders with 150 mm sanding plates.



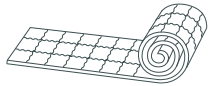
Polish Milk Festool Polishing Milk MPA 10000 (contents 500 ml) to achieve the high gloss surface finish.



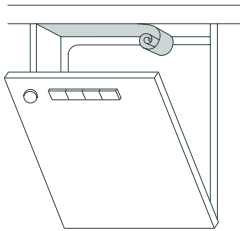
Polisher Special polishing paste to remove marks of wear and tear. Appropriate for all GetaCore surfaces with SemiMatt end finish. Alu tube containing 150 ml.



Corner Joint Set for a simple and high-quality joint between GetaCore worktops and the chipboard substrate.



Thermo Strip for professional isolation of cut outs for cookers/ovens.



Moisture Barrier to protect the worktop's reverse side near to cut-outs, ovens and dishwashers.



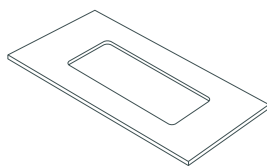
Cleaner Special Cleaner for all GetaCore surfaces to remove heavy stains, like e.g. coffee, tea, etc. contents 500 ml.



Care & Maintenance-Kit (small and large version) for semi-mat GetaCore surfaces.



Ottocoll MS Polymer Glue to fix stainless steel bowls with GetaCore. Cartridge 310 ml. Colour: grey.



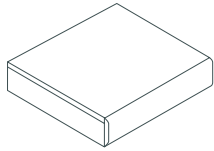
Milling Templates for Sinks / Basins HPL compact sheet for milling of bowl or basin forms.



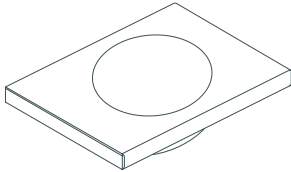
Filling Compound Biresin 2-component-system (1 kg each), fast hardening, to fill bowl / basin cut-outs.



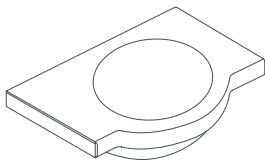
Sealing Rubber Sleeve The rubber sleeve safely seals drillings with a diameter of 35 mm, especially for water-tap drillings in elements. It protects the element (worktops, sinks /bowls, etc.) against ingress of moisture and by this prevents subsequent damage, like chipboard swelling, surface scratches, etc.. Depending upon the slab's thickness the adequate sleeve has to be chosen: thickness 29 or 39 mm.



AF 30/GC Bathroom Tops 35 mm chipboard type P2 to DIN EN 312, faced with 3 mm GetaCore® acrylic-bound solid surface material, wet sanded (P 600). Reverse side with 0.7 mm GetaLit® HPL balancer, front edge 3 mm GetaCore®, radiused 4 mm with chamfered GetaCore® edge.



AF 30/GC Bathroom Tops straight edged with bowl 35 mm chipboard type P2 to DIN EN 312, faced with 3 mm GetaCore® acrylic-bound solid surface material, wet sanded (P 600). Reverse side with 0.7 mm GetaLit® HPL balancer, front edge 3 mm GetaCore®, radiused 4 mm, including a GC 2011 white bowl GC-SO 465/335 undermounted.



AF 30/GC Bathroom Tops with bowl & cowl 35 mm chipboard type P2 to DIN EN 312, faced with 3 mm GetaCore® acrylic-bound solid surface material, wet sanded (P 600). Reverse side with 0.7 mm GetaLit® HPL balancer, front edge 3 mm GetaCore®, radiused 4 mm, including a GC 2011 white bowl GC-SO 465/335 undermounted, supplied with a cowl (colour matching to the bathroom top decor).

DECOR STOCK-CODE GUIDE

DECOR	SURFACE FINISH						GC Edge												
	2040/4100 x 330 x 28,7 (s-e)		2040/4100 x 530 x 28,7 (s-e)		4100 x 525 x 28,7 (s-e) Vanity Top (with bowl & cowl)		4100 x 530 x 28,7 (s-e) Vanity Top (straight edged with bowl)		2040/4100 X 33 X 3 mm			GC Edge							
									GC-RU-370		GC-SO-465/335		GC-OV-562		GC-W-600		GC-W-460		
AF 30/GC BATHROOM TOPS							BATHROOM BOWLS												
UNI																			
GC1001	WS	ST	ST	ST	ST	ST	SP	SP	SP	SP	SP	SP	SP	SP	SP	SP	SP	SP	SP
GC2011	WS	ST	ST	ST	ST	ST	SP	SP	SP	SP	SP	SP	SP	SP	SP	SP	SP	SP	SP
FINE																			
GC1112	WS	ST	ST	ST	ST	ST	SP	SP	SP	SP	SP	SP	SP	SP	SP	SP	SP	SP	SP
GC2417	WS	ST	ST	ST	ST	ST	SP	SP	SP	SP	SP	SP	SP	SP	SP	SP	SP	SP	SP
GC4143	WS	ST	ST	ST	ST	ST	SP	SP	SP	SP	SP	SP	SP	SP	SP	SP	SP	SP	SP
GC4712	WS	ST	ST	ST	ST	ST	SP	SP	SP	SP	SP	SP	SP	SP	SP	SP	SP	SP	SP
COARSE																			
GC2423	WS	ST	ST	ST	ST	ST	SP	SP	SP	SP	SP	SP	SP	SP	SP	SP	SP	SP	SP
GC3210	WS	ST	ST	ST	ST	ST	SP	SP	SP	SP	SP	SP	SP	SP	SP	SP	SP	SP	SP

Other bathroom top and bowl decors available upon enquiry.

ST = STOCK items, lead time ca. 2–3 days (s-e) = single-edged
 SP = SPECIAL order items, lead time ca. 2–3 weeks WS = wet sanded



GetaCore bowls/basins without overflow drilling for flush installation under GetaCore worktops or 10 mm GetaCore slabs. Including sealing rubber sleeves.

GetaLit® elements

Light stains/dirt

Use a dry or damp soft cloth, towel. Use a commercial cleaning agent, e.g. washing-up liquid, warm soapsuds with a cloth. If necessary, leave for a while and then rinse thoroughly with clean water.

Heavy stains/stubborn marks like paint, glue residues, ink, etc:

First remove any paraffin or wax mechanically. Iron off any residues with blotting paper (iron not too hot!). Then use an organic solvent spirit, acetone (nail varnish remover), petrol. DO NOT repeat too often! Read cleaning solvent-manufacturer's instructions carefully!

Moisture

Whereas boiling water and cooking splashes should do no harm we highly recommend removing any excess water immediately of the worktop's surface/joint in order to avoid any moisture ingress.

PVC-aprons/front edge

Please note that contact between the worktop's front edge and PVC-aprons, jeans-belts etc. over a long period of time may result in damage of the front edge, especially in the oven and sink area. Please take special care and try to avoid such over-use.

Scratches

Due to the nature of the product, worktops with dark colours (especially HighGloss) may show scratches. Scratches on HPL laminate worktops cannot be removed, they should be avoided in the first place by using a chopping board – a WorktopSaver. Wax polishes should NEVER be used. Do not use any abrasive, acid-containing or scouring agents. Especially not on dark colours, nor on HighGloss surface finishes, since these may show scratches.

GetaCore® elements

Light stains/dirt

Use a dry or damp soft cloth, towel. Use a commercial cleaning agent, e.g. washing-up liquid, warm soapsuds with a cloth. If necessary, leave for a while and then rinse thoroughly with clean water.

Care- and Maintenance-Kit

Please ask your local dealer for one and to advise you in detail about the after-care treatments. Minor scratches can be sanded away following our GetaCore® sanding-set instructions within our care & maintenance kit and/or within the sanding-set. There is a GetaCore® cleaner (which is actually bleach based) to clean away stubborn stains like ink, coffee, tea.

Moisture

Whereas boiling water and cooking splashes should do no harm we highly recommend removing any excess water immediately from the worktop's surface/joint in order to avoid any moisture ingress.

Scratches

Scratches on GetaCore® Solid Surface worktops can be re-sanded, but quite obviously they should be avoided in the first place, therefore please observe: Please always use a Worktop-Saver. Due to the nature of the product, worktops with dark colours (especially HighGloss) may show scratches. Do not use any abrasive, acid-containing or scouring agents. Also wax polishes should NEVER be used.

GetaCore® recommendations

With GetaCore® Westag & Getalit offers a perfect material for interior design by a convincing variety of colours and decors which can be converted into very powerful and flexible products. The client must be aware that ANY Solid Surfaces have a sanded finish and are in a way comparable to solid wood tops which also need handling with CARE and some after care from time to time. Clients should be given special recommendation when selecting Solid Surface worktops, informing them about the necessity to use WorktopSavers all the time, about GetaCore® care- & maintenance kits being available. Scratches are not a reason for complaint.

The thicker 10 mm material of some of the GetaCore® decors (e.g. Terrazzo, Raindrops) appears to be a bit lighter than any bonded 3 mm sheets; this lies in the nature of the product (3 mm may be even used for translucent modern interior fitting designs).


Since some of the GetaCore® decor schemes are created with large crunchies, joints may be noticeable in some areas, even at a perfect seamless joint. GetaCore® sheet material (elements) are delivered in surface finish wet-sanded and need to be given an end-finish either SemiMatt or HighGloss. Please use our sanding sets (instructions).

Sales Office United Kingdom

Unit 15 Orbital 25 Business Park | Dwight Road | Watford WD18 9DA

t. +44 1923 294 370 | f. +44 1923 236 121

info@westag.co.uk | www.westag.co.uk

 Plywood/Formwork

 Doors/Frames

 Laminates/Elements

Westag & Getalit AG

Postfach 26 29 | 33375 Rheda-Wiedenbrück | Germany

t. +49 5242 17-4400 | f. +49 5242 17-75166

www.westag-getalit.de | le.export@westag-getalit.de